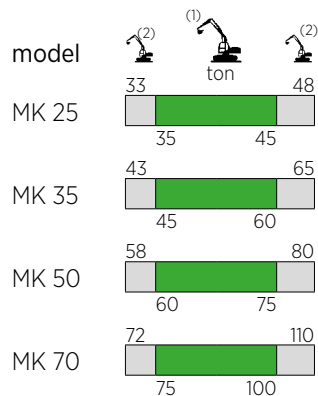
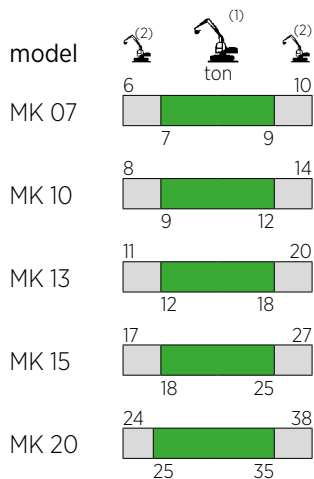


## FRANTUMATORE MULTI KIT MULTI KIT PULVERIZER BROYEUR MULTI KIT DEMOLEDOR MULTI KIT MEHRZWECKGERÄT MULTI KIT GARRA DEMOLIDORA MULTIFUNÇÕES

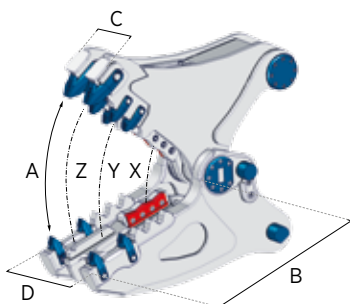


- (1) Accoppiamento escavatore-attrezzatura ottimale  
*Optimum excavator-equipment combination*  
Couplage pelle-équipement optimal  
*Acoplamiento excavadora-implemento optimal*  
Optimale Bagger-Ausrüstung Kombination  
*Combinação máquina-implemento ideal*
- (2) Accoppiamento escavatore-attrezzatura possibile  
*Possible excavator-equipment combination*  
Couplage pelle-équipement possible  
*Acoplamiento excavadora-implemento posible*  
Mögliche Bagger-Ausrüstung Kombination  
*Combinação máquina-implemento possível*

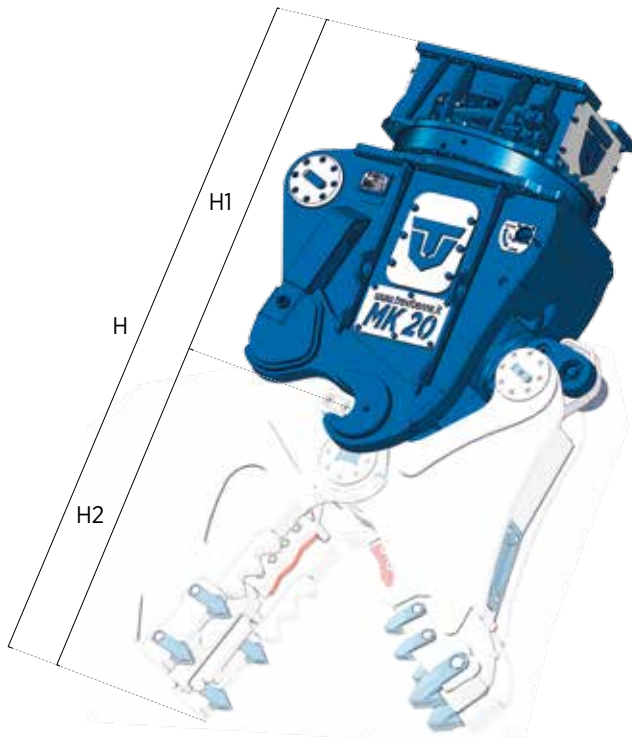
|      |        | MK 07 *  | MK 10 *   | MK 13 *   | MK 15     | MK 20     | MK 25     | MK 35     | MK 50     | MK 70     |
|------|--------|----------|-----------|-----------|-----------|-----------|-----------|-----------|-----------|-----------|
|      | kg.    | 410      | 600       | 795       | 1180      | 1465      | 1970      | 2150      | 3420      | 5020      |
| H1** | mm.    | 810      | 1000      | 1055      | 1220      | 1330      | 1370      | 1375      | 1540      | 1720      |
|      | bar    | 280      | 310       | 310       | 310       | 310       | 310       | 310       | 340       | 340       |
|      | l/min. | 80 / 150 | 150 / 250 | 180 / 250 | 180 / 250 | 200 / 300 | 250 / 350 | 300 / 400 | 400 / 500 | 450 / 600 |
|      | bar    | 140      | 140       | 140       | 140       | 140       | 140       | 140       | 140       | 140       |
|      | l/min. | 10       | 10        | 10        | 10        | 10        | 10        | 10        | 30        | 30        |
|      |        | /        | /         | /         | /         | /         | /         | /         | ✓         | ✓         |






\*Versione meccanica / \*Mechanical version / \*Version mécanique / \*Versión mecánica / \*Mechanischer Version

\*\*H = H1 + H2

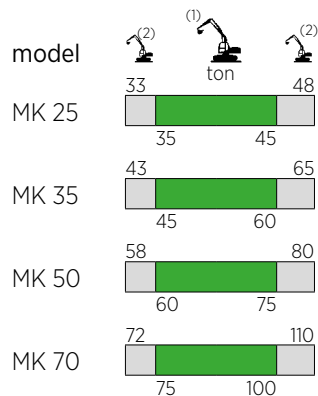
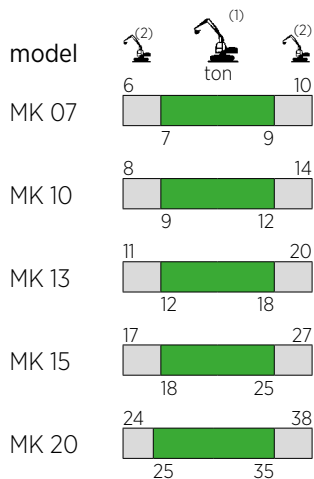


|       |     | Kit FR |       |       |       |       |       |       |       |       |
|-------|-----|--------|-------|-------|-------|-------|-------|-------|-------|-------|
|       |     | MK 07  | MK 10 | MK 13 | MK 15 | MK 20 | MK 25 | MK 35 | MK 50 | MK 70 |
|       | kg. | 250    | 410   | 635   | 680   | 1035  | 1270  | 1720  | 2940  | 3940  |
| A     | mm. | 530    | 660   | 720   | 740   | 880   | 905   | 970   | 1100  | 1300  |
| B     | mm. | 510    | 610   | 630   | 660   | 790   | 820   | 860   | 1030  | 1130  |
| C     | mm. | 175    | 195   | 235   | 300   | 310   | 360   | 390   | 440   | 500   |
| D     | mm. | 305    | 355   | 390   | 465   | 485   | 570   | 640   | 720   | 770   |
|       | mm. | 140    | 140   | 180   | 220   | 260   | 260   | 260   | 260   | 325   |
| H2**  | mm. | 660    | 760   | 870   | 890   | 1045  | 1100  | 1210  | 1440  | 1580  |
| X     | t.  | 75     | 110   | 125   | 190   | 205   | 290   | 330   | 400   | 535   |
| Y     | t.  | 40     | 60    | 65    | 100   | 125   | 135   | 150   | 220   | 285   |
| Z     | t.  | 30     | 40    | 50    | 65    | 80    | 105   | 115   | 140   | 190   |
| Ø max | mm. | 20     | 25    | 30    | 35    | 40    | 45    | 50    | 60    | 75    |
|       | mm. | /      | /     | /     | /     | /     | /     | /     | /     | /     |
|       | mm. | /      | /     | /     | /     | /     | /     | /     | /     | /     |
|       | mm. | /      | /     | /     | /     | /     | /     | /     | /     | /     |



|   |     | Kit CS |       |       |       |       |       |       |       |       |
|---|-----|--------|-------|-------|-------|-------|-------|-------|-------|-------|
|   |     | MK 07  | MK 10 | MK 13 | MK 15 | MK 20 | MK 25 | MK 35 | MK 50 | MK 70 |
|  kg      | kg. | 210    | 360   | 580   | 630   | 950   | 1240  | 1425  | 2290  | 2850  |
| A   | mm. | 250    | 320   | 400   | 420   | 480   | 500   | 525   | 575   | 700   |
| B   | mm. | 325    | 390   | 450   | 485   | 525   | 560   | 565   | 660   | 755   |
| C   | mm. | 65     | 75    | 80    | 100   | 120   | 130   | 130   | 135   | 165   |
| D   | mm. | 250    | 300   | 300   | 330   | 380   | 435   | 435   | 480   | 550   |
|          | mm. | 310    | 370   | 410   | 470   | 510   | 565   | 565   | 660   | 755   |
| H2**  | mm. | 545    | 630   | 725   | 775   | 890   | 935   | 990   | 1150  | 1300  |
| X   | t.  | 175    | 250   | 310   | 420   | 515   | 720   | 740   | 875   | 1100  |
| Y   | t.  | 70     | 100   | 120   | 155   | 235   | 290   | 315   | 385   | 470   |
| Z   | t.  | 40     | 60    | 75    | 85    | 125   | 145   | 160   | 205   | 240   |
| ∅ max   | mm. | 30     | 35    | 40    | 50    | 60    | 65    | 70    | 90    | 110   |
|  IPN max | mm. | 80     | 120   | 140   | 210   | 360   | 380   | 400   | 500   | 600   |
|  HEA max | mm. | /      | 100   | 120   | 140   | 230   | 250   | 260   | 300   | 400   |
|  max     | mm. | /      | /     | /     | /     | /     | /     | /     | /     | /     |

## FRANTUMATORE MULTI KIT MULTI KIT PULVERIZER BROYEUR MULTI KIT DEMOLEDOR MULTI KIT MEHRZWECKGERÄT MULTI KIT GARRA DEMOLIDORA MULTIFUNÇÕES

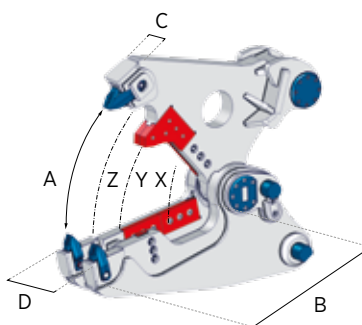


- (1) Accoppiamento escavatore-attrezzatura ottimale**  
Optimum excavator-equipment combination  
Couplage pelle-équipement optimal  
Acoplamiento excavadora-implemento optimal  
Optimale Bagger-Ausrüstung Kombination  
Combinação máquina-implemento ideal
- (2) Accoppiamento escavatore-attrezzatura possibile**  
Possible excavator-equipment combination  
Couplage pelle-équipement possible  
Acoplamiento excavadora-implemento posible  
Mögliche Bagger-Ausrüstung Kombination  
Combinação máquina-implemento possível

|      |        | MK 07 *  | MK 10 *   | MK 13 *   | MK 15     | MK 20     | MK 25     | MK 35     | MK 50     | MK 70     |
|------|--------|----------|-----------|-----------|-----------|-----------|-----------|-----------|-----------|-----------|
|      | kg.    | 410      | 600       | 795       | 1180      | 1465      | 1970      | 2150      | 3420      | 5020      |
| H1** | mm.    | 810      | 1000      | 1055      | 1220      | 1330      | 1370      | 1375      | 1540      | 1720      |
|      | bar    | 280      | 310       | 310       | 310       | 310       | 310       | 310       | 340       | 340       |
|      | l/min. | 80 / 150 | 150 / 250 | 180 / 250 | 180 / 250 | 200 / 300 | 250 / 350 | 300 / 400 | 400 / 500 | 450 / 600 |
|      | bar    | 140      | 140       | 140       | 140       | 140       | 140       | 140       | 140       | 140       |
|      | l/min. | 10       | 10        | 10        | 10        | 10        | 10        | 10        | 30        | 30        |
|      |        | /        | /         | /         | /         | /         | /         | /         | ✓         | ✓         |

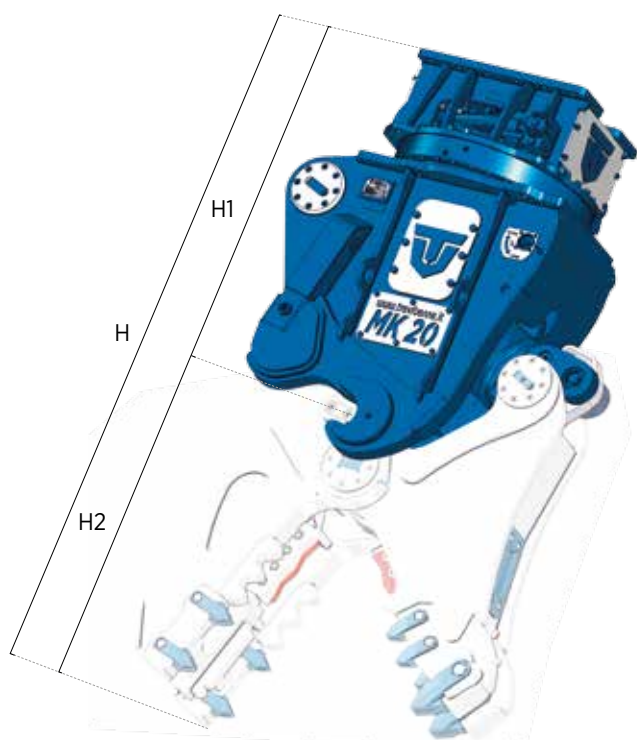
\*Versione meccanica / \*Mechanical version / \*Version mécanique / \*Versión mecánica / \*Mechanischer Version






\*\*H = H1 + H2



|       |     | Kit CB |       |       |       |       |       |       |       |       |
|-------|-----|--------|-------|-------|-------|-------|-------|-------|-------|-------|
|       |     | MK 07  | MK 10 | MK 13 | MK 15 | MK 20 | MK 25 | MK 35 | MK 50 | MK 70 |
|       | kg. | *      | 450   | 585   | 720   | 1090  | 1305  | 1780  | 2900  | 3890  |
| A     | mm. | *      | 580   | 640   | 740   | 810   | 850   | 910   | 990   | 1160  |
| B     | mm. | *      | 560   | 700   | 720   | 800   | 815   | 875   | 1065  | 1180  |
| C     | mm. | *      | 100   | 100   | 110   | 130   | 130   | 130   | 175   | 185   |
| D     | mm. | *      | 290   | 310   | 320   | 350   | 410   | 410   | 560   | 610   |
|       | mm. | *      | 350   | 400   | 420   | 480   | 500   | 500   | 575   | 640   |
| H2**  | mm. | *      | 800   | 920   | 1000  | 1125  | 1155  | 1255  | 1490  | 1640  |
| X     | t.  | *      | 220   | 270   | 420   | 510   | 700   | 740   | 900   | 1010  |
| Y     | t.  | *      | 60    | 65    | 100   | 125   | 155   | 175   | 220   | 290   |
| Z     | t.  | *      | 40    | 50    | 65    | 80    | 100   | 115   | 140   | 185   |
| ∅ max | mm. | *      | 30    | 35    | 40    | 45    | 50    | 55    | 70    | 85    |
|       | mm. | /      | /     | /     | /     | /     | /     | /     | /     | /     |
|       | mm. | /      | /     | /     | /     | /     | /     | /     | /     | /     |
|       | mm. | /      | /     | /     | /     | /     | /     | /     | /     | /     |

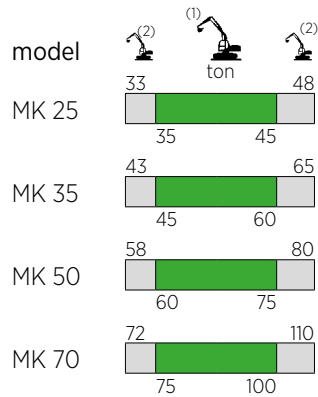
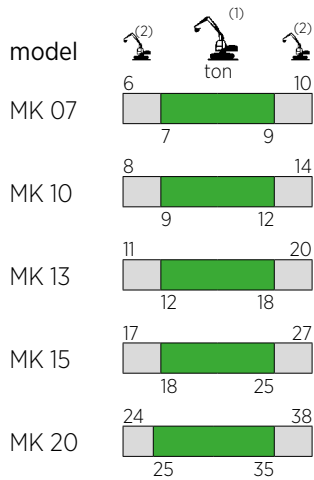
(\*) Disponibile su richiesta / (\*) Available on request / (\*) Disponible sur demande / (\*) Disponible a petición / (\*) Verfügbar auf Anfrage  
(\*) Disponível para pedido



|   |     | Kit CH |       |       |       |       |       |       |       |       |
|---|-----|--------|-------|-------|-------|-------|-------|-------|-------|-------|
|   |     | MK 07  | MK 10 | MK 13 | MK 15 | MK 20 | MK 25 | MK 35 | MK 50 | MK 70 |
|  kg.     | kg. | *      | *     | 610   | 740   | 1000  | 1300  | 1590  | *     | *     |
| A   | mm. | *      | *     | 445   | 500   | 635   | 550   | 720   | *     | *     |
| B   | mm. | *      | *     | 580   | 615   | 750   | 785   | 960   | *     | *     |
| C   | mm. | *      | *     | 235   | 275   | 295   | 350   | 350   | *     | *     |
| D   | mm. | *      | *     | 335   | 395   | 415   | 475   | 475   | *     | *     |
|          | mm. | *      | *     | 530   | 530   | 660   | 600   | 750   | *     | *     |
| H2**  | mm. | *      | *     | 900   | 910   | 1080  | 1100  | 1280  | *     | *     |
| X   | t.  | *      | *     | 245   | 260   | 375   | 720   | 740   | *     | *     |
| Y   | t.  | *      | *     | 105   | 115   | 150   | 215   | 220   | *     | *     |
| Z   | t.  | *      | *     | 60    | 80    | 100   | 130   | 135   | *     | *     |
| ∅ max   | mm. | *      | *     | 40    | 45    | 50    | 55    | 60    | *     | *     |
|  IPN max | mm. | /      | /     | /     | /     | /     | /     | /     | /     | /     |
|  HEA max | mm. | /      | /     | /     | /     | /     | /     | /     | /     | /     |
|  max     | mm. | /      | /     | /     | /     | /     | /     | /     | /     | /     |

(\*) Disponibile su richiesta / (\*) Available on request / (\*) Disponible sur demande / (\*) Disponible a petición / (\*) Verfügbar auf Anfrage  
 (\*\*) Disponivel para pedido

## FRANTUMATORE MULTI KIT MULTI KIT PULVERIZER BROYEUR MULTI KIT DEMOLEDOR MULTI KIT MEHRZWECKGERÄT MULTI KIT GARRA DEMOLIDORA MULTIFUNÇÕES

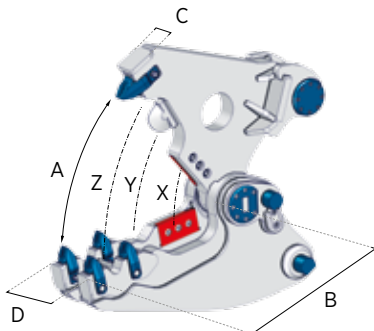


- (1) Accoppiamento escavatore-attrezzatura ottimale**  
*Optimum excavator-equipment combination*  
Couplage pelle-équipement optimal  
*Acoplamiento excavadora-implemento optimal*  
Optimale Bagger-Ausrüstung Kombination  
*Combinação máquina-implemento ideal*
- (2) Accoppiamento escavatore-attrezzatura possibile**  
*Possible excavator-equipment combination*  
Couplage pelle-équipement possible  
*Acoplamiento excavadora-implemento posible*  
Mögliche Bagger-Ausrüstung Kombination  
*Combinação máquina-implemento possível*

|      |        | MK 07 *  | MK 10 *   | MK 13 *   | MK 15     | MK 20     | MK 25     | MK 35     | MK 50     | MK 70     |
|------|--------|----------|-----------|-----------|-----------|-----------|-----------|-----------|-----------|-----------|
|      | kg.    | 410      | 600       | 795       | 1180      | 1465      | 1970      | 2150      | 3420      | 5020      |
| H1** | mm.    | 810      | 1000      | 1055      | 1220      | 1330      | 1370      | 1375      | 1540      | 1720      |
|      | bar    | 280      | 310       | 310       | 310       | 310       | 310       | 310       | 340       | 340       |
|      | l/min. | 80 / 150 | 150 / 250 | 180 / 250 | 180 / 250 | 200 / 300 | 250 / 350 | 300 / 400 | 400 / 500 | 450 / 600 |
|      | bar    | 140      | 140       | 140       | 140       | 140       | 140       | 140       | 140       | 140       |
|      | l/min. | 10       | 10        | 10        | 10        | 10        | 10        | 10        | 30        | 30        |
|      |        | /        | /         | /         | /         | /         | /         | /         | ✓         | ✓         |

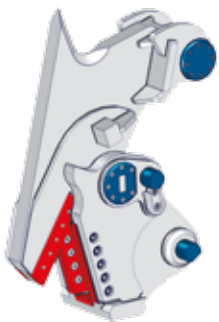
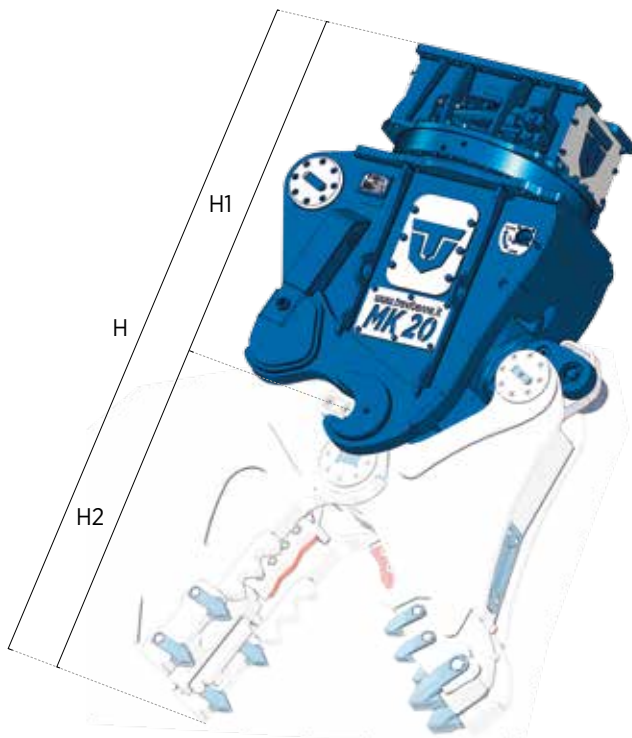
\*Versione meccanica / \*Mechanical version / \*Version mécanique / \*Versión mecánica / \*Mechanischer Version

\*\*H = H1 + H2



|       |     | Kit HC |       |       |       |       |       |       |       |       |
|-------|-----|--------|-------|-------|-------|-------|-------|-------|-------|-------|
|       |     | MK 07  | MK 10 | MK 13 | MK 15 | MK 20 | MK 25 | MK 35 | MK 50 | MK 70 |
|       | kg. | 250    | 435   | 575   | 680   | 1075  | 1235  | 1700  | 2750  | *     |
| A     | mm. | 535    | 600   | 680   | 745   | 870   | 880   | 925   | 1010  | *     |
| B     | mm. | 490    | 610   | 710   | 740   | 765   | 815   | 875   | 1070  | *     |
| C     | mm. | 90     | 100   | 100   | 110   | 130   | 130   | 130   | 175   | *     |
| D     | mm. | 240    | 300   | 300   | 340   | 350   | 400   | 450   | 550   | *     |
|       | mm. | 125    | 150   | 200   | 175   | 240   | 250   | 250   | 290   | *     |
| H2**  | mm. | 690    | 810   | 925   | 1005  | 1125  | 1170  | 1275  | 1500  | *     |
| X     | t.  | 100    | 135   | 165   | 220   | 290   | 350   | 385   | 465   | *     |
| Y     | t.  | 45     | 60    | 75    | 90    | 130   | 150   | 180   | 220   | *     |
| Z     | t.  | 30     | 40    | 50    | 65    | 85    | 105   | 115   | 140   | *     |
| ∅ max | mm. | 20     | 25    | 30    | 35    | 40    | 45    | 50    | 60    | *     |
|       | mm. | /      | /     | /     | /     | /     | /     | /     | /     | /     |
|       | mm. | /      | /     | /     | /     | /     | /     | /     | /     | /     |
|       | mm. | /      | /     | /     | /     | /     | /     | /     | /     | /     |

(\*) Disponibile su richiesta / (\*) Available on request / (\*) Disponible sur demande / (\*) Disponible a petición / (\*) Verfügbar auf Anfrage  
(\*) Disponível para pedido



|         |     | Kit CL |       |       |       |       |       |       |       |       |
|---------|-----|--------|-------|-------|-------|-------|-------|-------|-------|-------|
|         |     | MK 07  | MK 10 | MK 13 | MK 15 | MK 20 | MK 25 | MK 35 | MK 50 | MK 70 |
| kg.     |     | *      | *     | *     | 560   | 1000  | 1400  | 1750  | *     | *     |
| A       | mm. | *      | *     | *     | 270   | 350   | 370   | 400   | *     | *     |
| B       | mm. | *      | *     | *     | 360   | 465   | 520   | 780   | *     | *     |
| C       | mm. | *      | *     | *     | 115   | 145   | 150   | 160   | *     | *     |
| D       | mm. | *      | *     | *     | 310   | 390   | 440   | 480   | *     | *     |
| mm.     |     | *      | *     | *     | 320   | 400   | 430   | 480   | *     | *     |
| H2**    | mm. | *      | *     | *     | 505   | 630   | 695   | 750   | *     | *     |
| X       | t.  | *      | *     | *     | 220   | 270   | 320   | 350   | *     | *     |
| Y       | t.  | *      | *     | *     | 150   | 200   | 225   | 230   | *     | *     |
| Z       | t.  | /      | /     | /     | 110   | 140   | 160   | 170   | *     | *     |
| ∅ max   | mm. | /      | /     | /     | /     | /     | /     | /     | /     | /     |
| IPN max | mm. | /      | /     | /     | /     | /     | /     | /     | /     | /     |
| HEA max | mm. | /      | /     | /     | /     | /     | /     | /     | /     | /     |
| max     | mm. | *      | *     | *     | 10    | 12    | 14    | 16    | *     | *     |

(\*) Disponibile su richiesta / (\*) Available on request / (\*) Disponible sur demande / (\*) Disponible a petició / (\*) Verfügbar auf Anfrage  
 (\*) Disponível para pedido