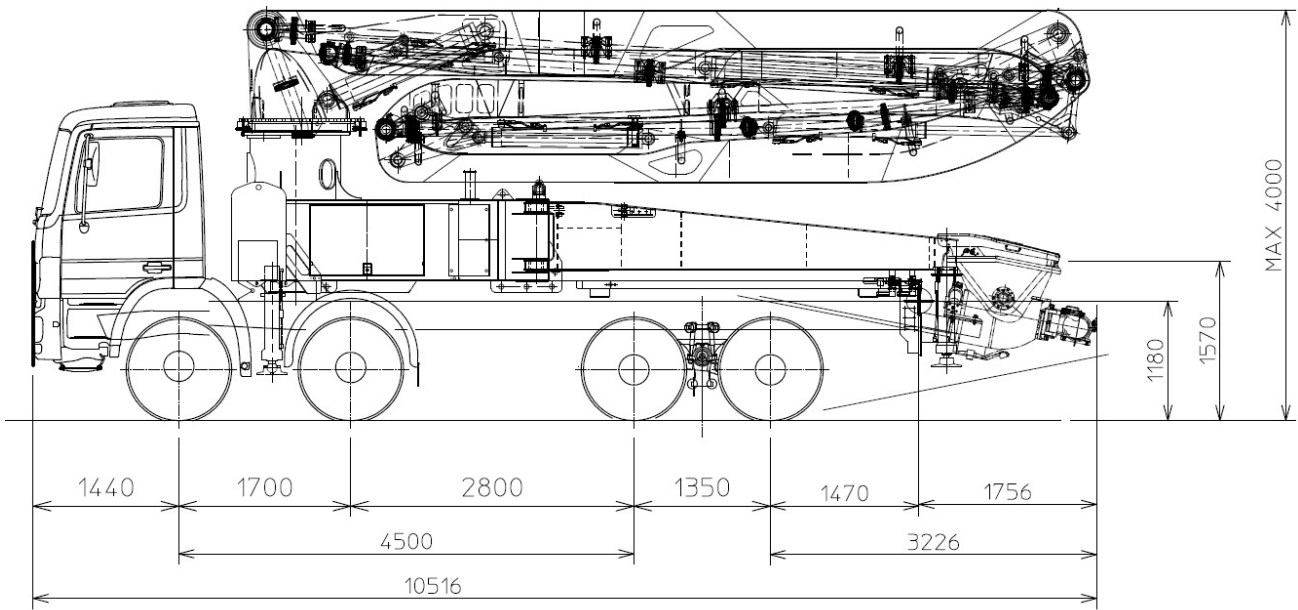


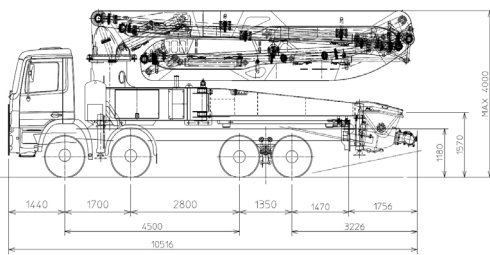
**RELIABLE
EASY TO USE
TOP VALUE FOR MONEY**

TRUCK-MOUNTED CONCRETE BOOM PUMP

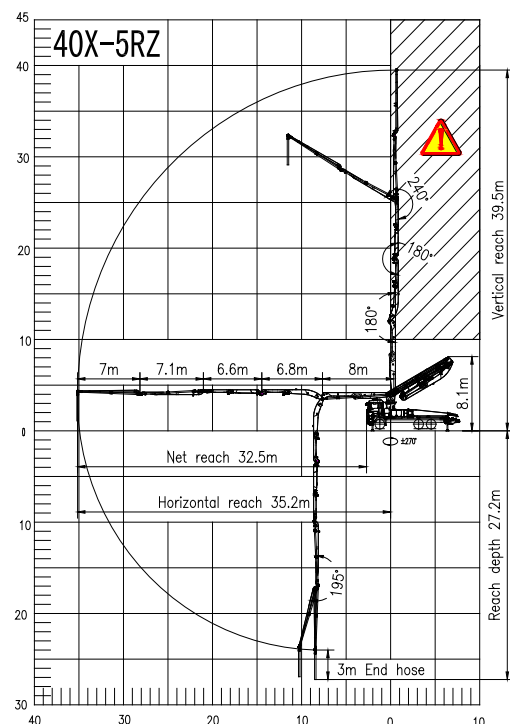
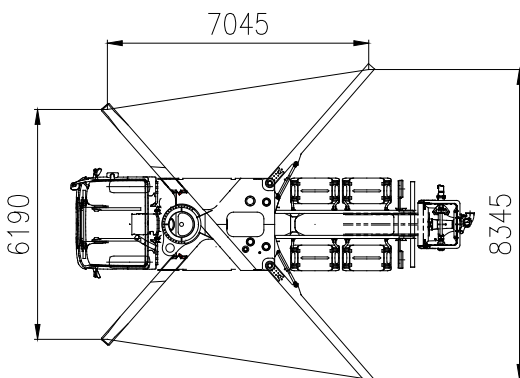
Placing boom	K40C-5RZ
Pumping unit	PU1607
Driven by	PTO
Chassis	3-4 axles



Dimensions



Dimensions varying according to truck assembly



Main features

- Compact in design, 40m pump mounted on 3-axle truck.
- Efficient pump unit, ideal for long time use.
- Agile placing boom with 5 arms with unfolding height 8.5m only, which gives a wide work range.
- One side lateral support enables to work in narrow sites.
- Controller is designed for heavy duty use, with a monitor, it monitors the pump intelligently on working data management, real-time diagnostics, alarm logging, and service interval notice.
- Rich in configurations and high quality components.
- Boom vibration-absorption technology.
- Stabilization control on boom.
- Multilingual human-computer interaction system.
- PWM+CAN dual communication mode remote control.
- Pumping flexible active control technology

Standard equipment

- 1 proportional radio control with 20m cable
- Pneumatic auto lubrication on mixing and pumping unit
- Controller with monitor
- MBIT (Multi-Boom intelligent Technology) control
- One side lateral support system
- Optimized hopper with agitator
- Special alloy wearing plate and cutting ring
- Long-life delivery pipeline
- Rear light on hopper, horn on boom
- Outrigger support platesx4 with housing
- High pressure water pump
- Accessories for cleaning and pipes washing
- Blue and white color painting with wax protection
- Traffic permission kit
- Tool kit for daily maintenance
- Two Use & Maintenance Manuals
- Spare parts and service Manual

Optional

- Additional remote control with 20m cable
- Other configuration on demand

TRUCK-MOUNTED CONCRETE BOOM PUMP

Placing boom	K40C-5RZ
Pumping unit	PU1607
Driven by	PTO
Chassis	3-4 axles

Pumping unit technical data

Model	PU1607	
Maximum theoretical output	<i>m³/h</i>	160/100
Maximum pressure on concrete	<i>bar</i>	70/110
Maximum number of cycles per min.	<i>nr.</i>	28/19
Conc. cylinders (diam. x stroke)	<i>mm</i>	230x2100
Concrete hopper capacity	<i>l</i>	550
Hydraulic circuit		Open

Placing boom technical data

Model	40X-5ZR	
Pipeline diameter	<i>mm</i>	125
Maximum vertical reach	<i>m</i>	39,5
Maximum horizontal distance (from center of slewing axis)	<i>m</i>	35,15
Minimum unfolding height	<i>m</i>	8,1
Section numbers		5
1st section opening angle		90
2nd section opening angle		180
3rd section opening angle		180
4th section opening angle		240
5th section opening angle		195
Rotating angle		270
End hose length	<i>m</i>	3

Technical data and characteristics subject to modifications without notice